

BILL OF MATERIALS			
ITEM NO.	PART NUMBER	DESCRIPTION	QUANTITY
1	1102	10' Conveyor Top	1
2	423	Push Button, Twist Release, 22mm, Mushroom, Red	1
3	426	Contact Block, NC, Screw Terminals	1
4	427	Label, E-Stop Switch	1
5	1110	Nut, 1/2" Conduit, .5 NPT	1
6	1186	Small Outlet Box	1
7	1703	Cable Assembly, v3 Conveyor	1
8	1038	Screw, BHSCS, 6-32 x .500	2



**Rheological Solutions, Inc.**  
 8345 Beechcroft Avenue, Suite J  
 Gaithersburg, MD 20879-4164  
 Phone (301) 963-7157

ALL DIMENSIONS  
 IN INCHES  
 TOLERANCE UNLESS  
 OTHERWISE SPECIFIED  
 .XXX = ±.005  
 .XX = ±.015  
 ANGLE = ±1/2°

THIS DRAWING AND INFORMATION CONTAINED  
 IN THIS DRAWING ARE CONFIDENTIAL PROPERTY  
 OF RHEOLOGICAL SOLUTIONS, INC. NO PART OF  
 THIS DRAWING OR ANY INFORMATION CONTAINED  
 IN THIS DRAWING MAY BE REPRODUCED OR  
 TRANSFERRED BY ANY MEANS WITHOUT PERMISSION  
 IN WRITING FROM RHEOLOGICAL SOLUTIONS, INC.

DIMENSIONAL LIMITS  
 APPLY BEFORE PLATING  
 INTERPRET PER ANSI  
 Y14.5M-1982

DESCRIPTION			
Conveyor Assembly, v3, 180VDC, 10ft			
MATERIAL			
See BOM			
FINISH			
As Supplied			
DRAWING NO.	REV.	PART NUMBER	
56800	000	1701	
DRAWN BY		DATE	SIZE
BJB		7/27/06	C

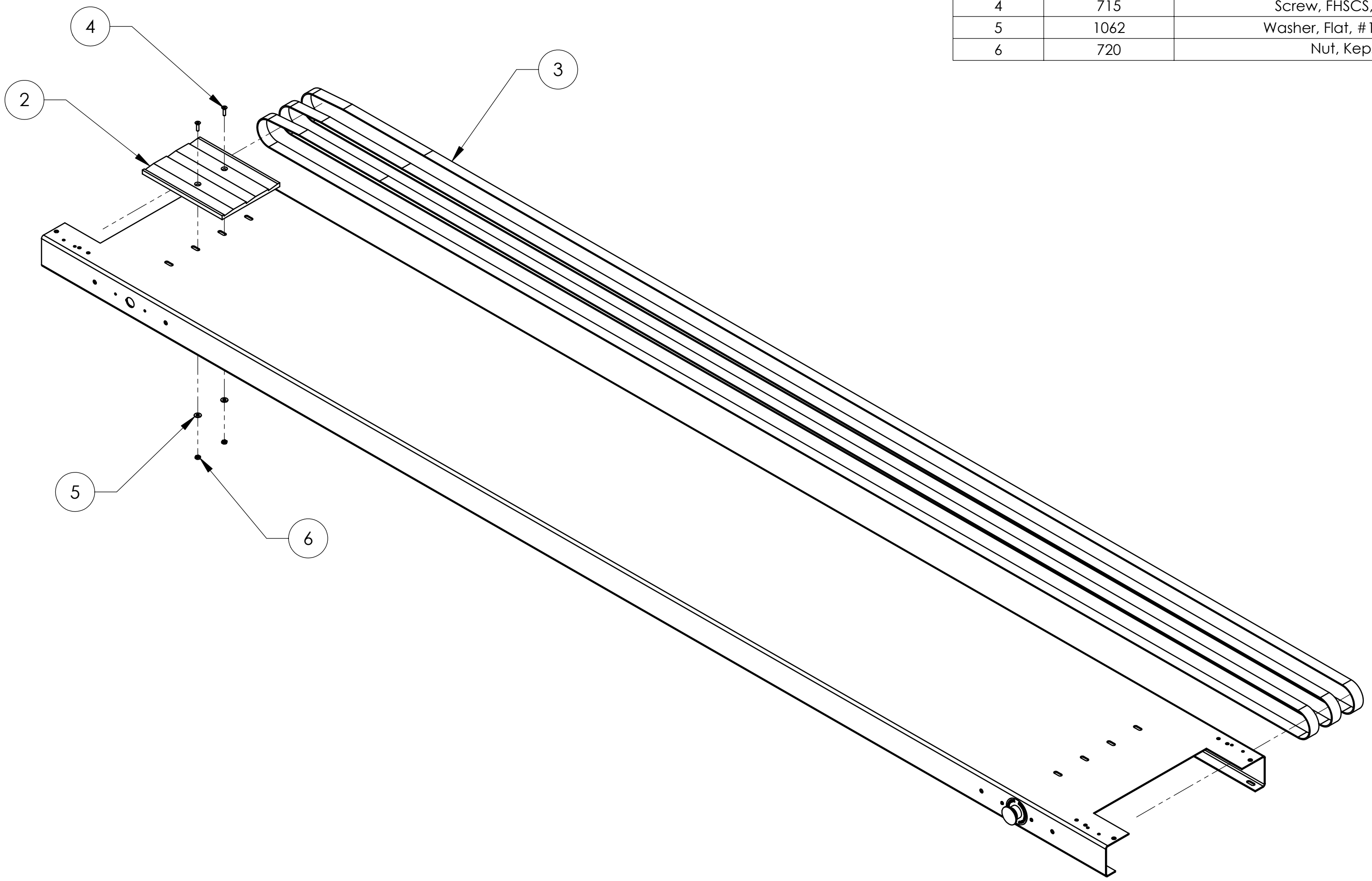
REV	DESCRIPTION	APPR.	DATE	DO NOT SCALE	SHEET 1 OF 7
-----	-------------	-------	------	--------------	--------------

6 5 4 3 2 1

BILL OF MATERIALS			
ITEM NO.	PART NUMBER	DESCRIPTION	QUANTITY
2	2558_Conv Pick Up	Conveyor Pick Up	1
3	2608	240x1 SAB8E Endless Belt	3
4	715	Screw, FHSCS, 10-32 x .750	2
5	1062	Washer, Flat, #10, Zinc Plated	2
6	720	Nut, Keps, 10-32	2

F  
E  
D  
C  
B  
A

F  
E  
D  
C  
B  
A



Rheological Solutions, Inc.  
8345 Beechcroft Avenue, Suite J  
Gaithersburg, MD 20879-4164  
Phone (301) 963-7157

THIS DRAWING AND INFORMATION CONTAINED IN THIS DRAWING ARE CONFIDENTIAL PROPERTY OF RHEOLOGICAL SOLUTIONS, INC. NO PART OF THIS DRAWING OR ANY INFORMATION CONTAINED IN THIS DRAWING MAY BE REPRODUCED OR TRANSFERRED BY ANY MEANS WITHOUT PERMISSION IN WRITING FROM RHEOLOGICAL SOLUTIONS, INC.

ALL DIMENSIONS IN INCHES  
TOLERANCE UNLESS OTHERWISE SPECIFIED  
.XXX = ±.005  
.XX = ±.015  
ANGLE = ±1/2°

DIMENSIONAL LIMITS APPLY BEFORE PLATING INTERPRET PER ANSI Y14.5M-1982

DESCRIPTION  
Conveyor Assembly, v3, 180VDC, 10ft

MATERIAL  
See BOM

FINISH  
As Supplied

DRAWING NO. 56800	REV. 000	PART NUMBER 1701
----------------------	-------------	---------------------

DRAWN BY BJB	DATE 7/27/06	SIZE C
-----------------	-----------------	-----------

REV	DESCRIPTION	APPR.	DATE	DO NOT SCALE	SHEET 2 OF 7

6 5 4 3 2 1



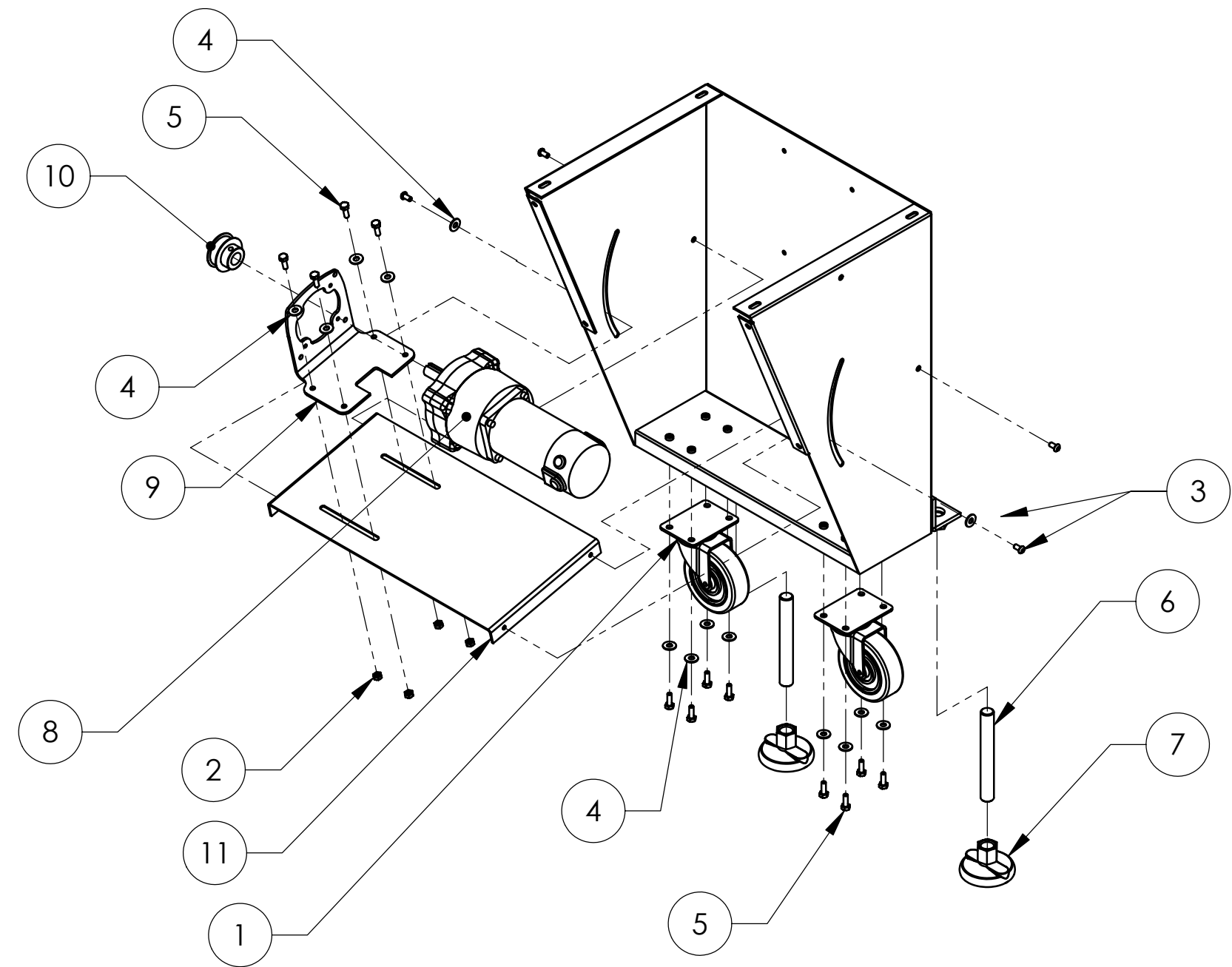
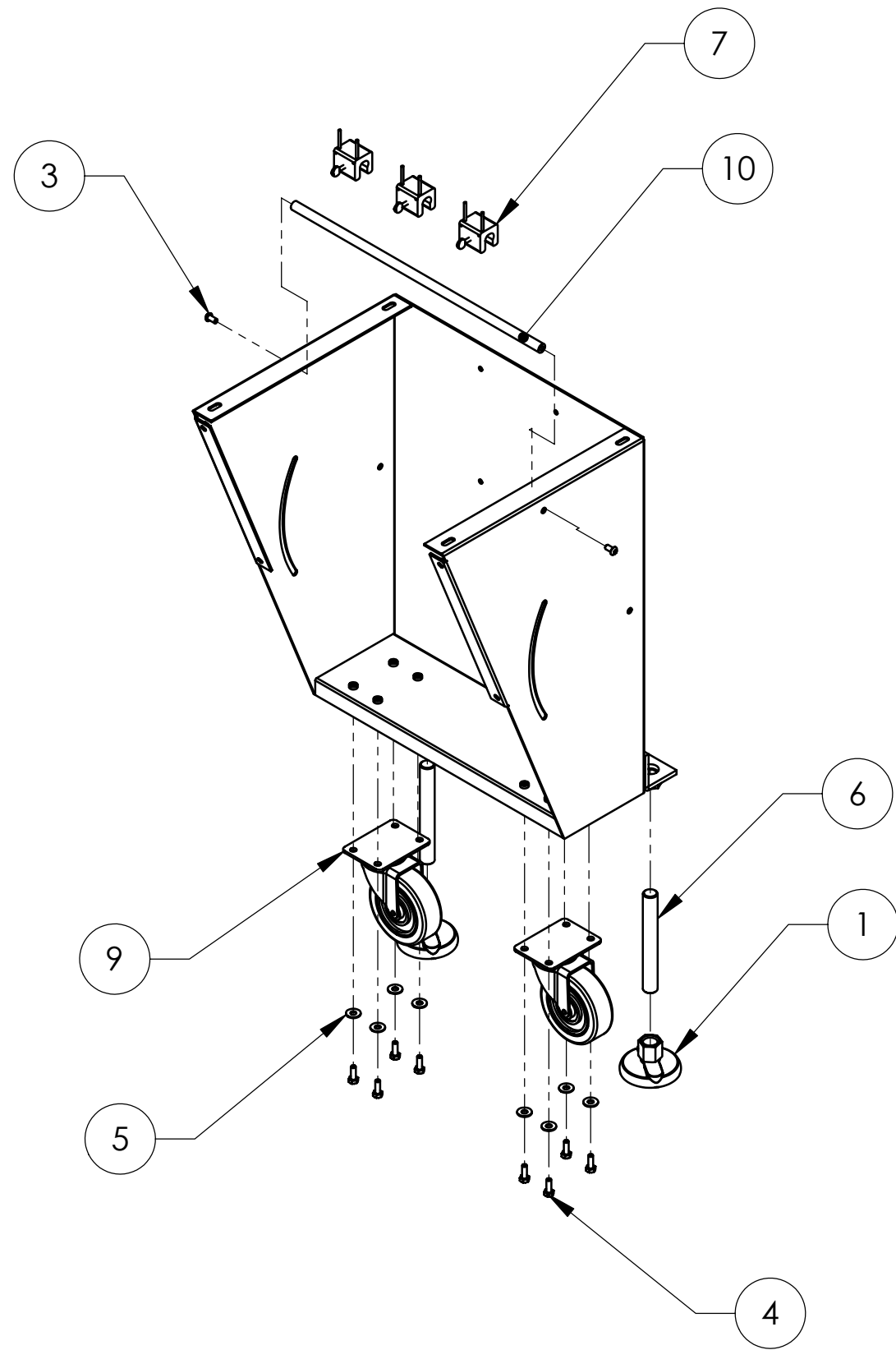
6 5 4 3 2 1

BILL OF MATERIALS

ITEM NO.	PART NUMBER	DESCRIPTION	QUANTITY
1	2157	3/4-10 3" Base Feet	2
3	825	Screw, BHSCS, .250-20 x .500	2
4	824	Screw, HHCS, .250-20 x .750	8
5	831	Washer, Flat, 1/4, Zinc Plated Steel	8
6	2158	3/4-10 Threaded Stud	2
7	655_Belt Guide Lin	1" Belt Guides	3
8	718_Thumb Screw	Screw, Thumb, 10-32 x .75, Zinc Plated Steel	3
9	1240	4" Casters	2
10	1190	Conveyor Support Rod	1

BILL OF MATERIALS

ITEM NO.	PART NUMBER	DESCRIPTION	QUANTITY
1	1240	4" Casters	2
2	833	Nut, Keps, .250-20	8
3	825	Screw, BHSCS, .250-20 x .500	4
4	831	Washer, Flat, 1/4, Zinc Plated Steel	14
5	824	Screw, HHCS, .250-20 x .750	12
6	2158	3/4-10 Threaded Stud	2
7	2157	3/4-10 3" Base Feet	2
8	1702	Motor, 1/4HP, 180VDC, 1:30	1
9	1217	Right Angle	1
10	1241	15LF050 Pulley 3/4 Bore	1
11	1138	Conveyor Motor Mount	1




Rheological Solutions, Inc.  
8345 Beechcroft Avenue, Suite J  
Gaithersburg, MD 20879-4164  
Phone (301) 963-7157

THIS DRAWING AND INFORMATION CONTAINED IN THIS DRAWING ARE CONFIDENTIAL PROPERTY OF RHEOLOGICAL SOLUTIONS, INC. NO PART OF THIS DRAWING OR ANY INFORMATION CONTAINED IN THIS DRAWING MAY BE REPRODUCED OR TRANSFERRED BY ANY MEANS WITHOUT PERMISSION IN WRITING FROM RHEOLOGICAL SOLUTIONS, INC.

ALL DIMENSIONS IN INCHES

TOLERANCE UNLESS OTHERWISE SPECIFIED

.XXX = ±.005

.XX = ±.015

ANGLE = ± 1/2°

DIMENSIONAL LIMITS APPLY BEFORE PLATING INTERPRET PER ANSI Y14.5M-1982

DESCRIPTION Conveyor Assembly, v3, 180VDC, 10ft			
MATERIAL See BOM			
FINISH As Supplied			
DRAWING NO. 56800	REV. 000	PART NUMBER 1701	
DRAWN BY BJB		DATE 7/27/06	SIZE C
REV	DESCRIPTION	APPR.	DATE

6 5 4 3 2 1

F  
E  
D  
C  
B  
A

F  
E  
D  
C  
B  
A

6

5

4

3

2

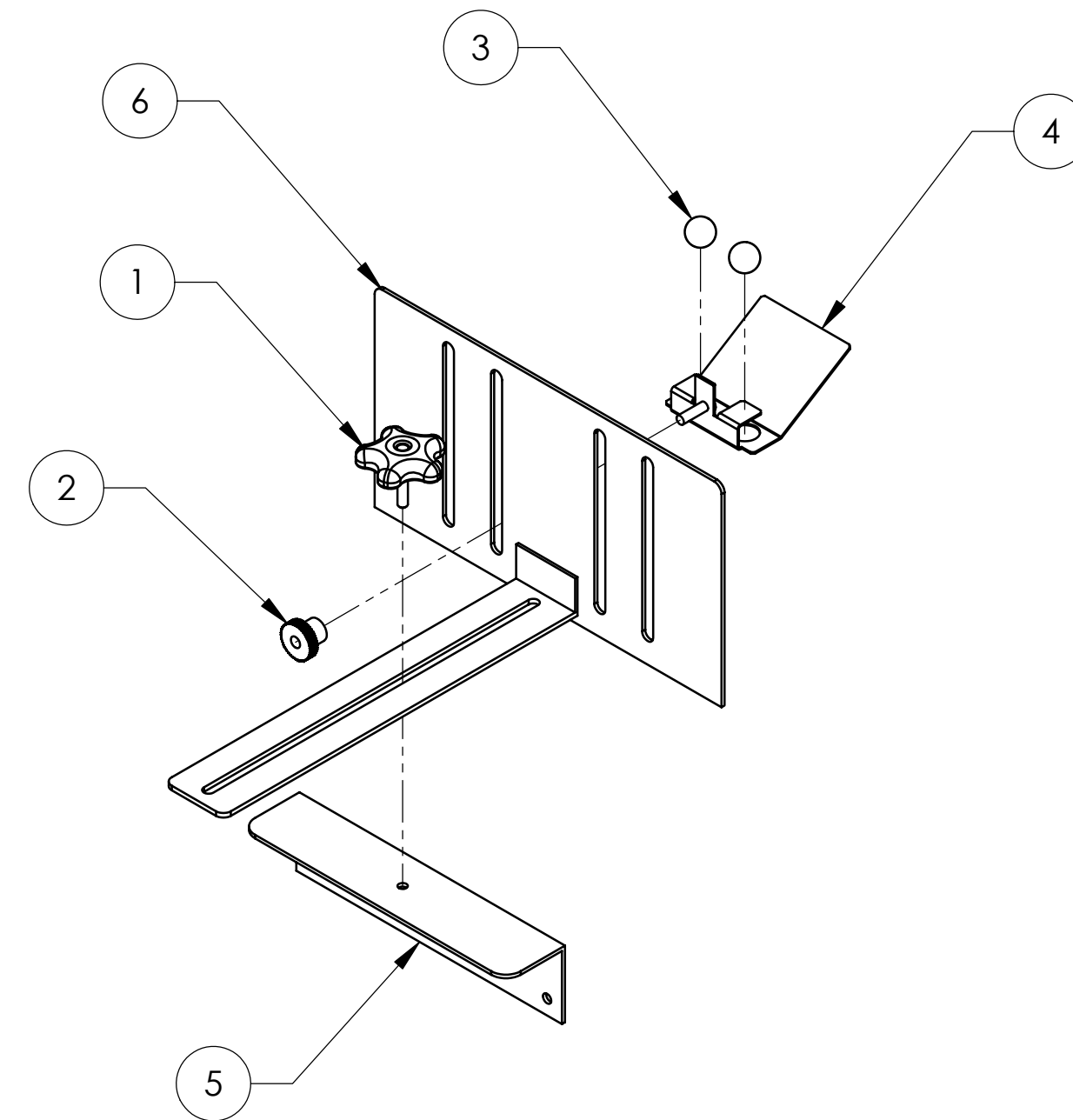
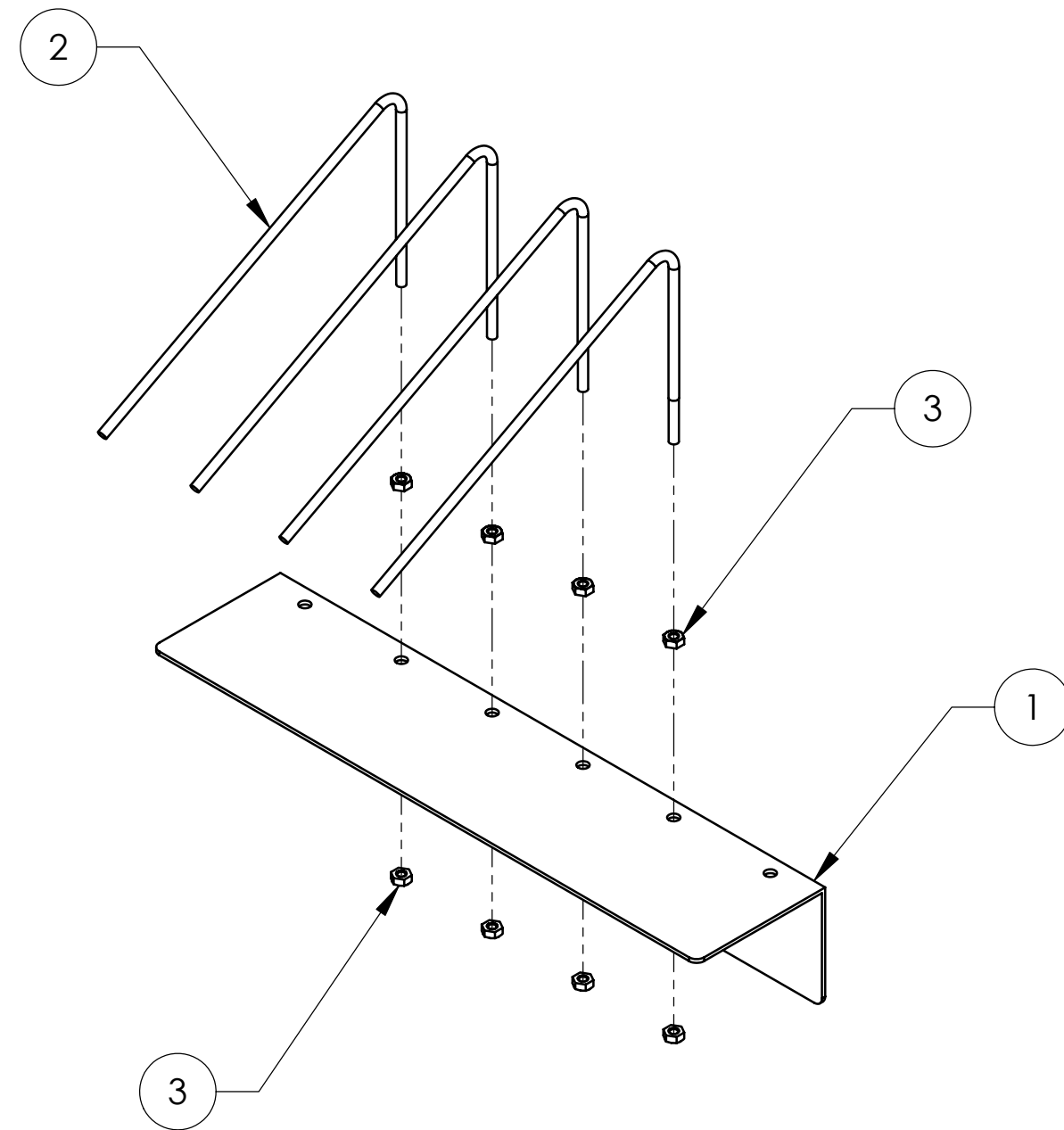
1

BILL OF MATERIALS

ITEM NO.	PART NUMBER	DESCRIPTION	QUANTITY
1	1137	Conveyor Cover	1
2	1140	Wire Paper Catch	4
3	833	Nut, Keps, .250-20	8

BILL OF MATERIALS

ITEM NO.	PART NUMBER	DESCRIPTION	QUANTITY
1	1243	1/4-20 Handle	1
2	1242	Nut, Thumb, .3125-18 x .625, Steel	1
3	1214	Ball Bearing	2
4	1213	Thin Media Retrainer	1
5	1193_Back Stop Mount	Back Stop Mount	1
6	1192_Back Stop	Conveyor Back Stop	1



Rheological Solutions, Inc.  
8345 Beechcroft Avenue, Suite J  
Gaithersburg, MD 20879-4164  
Phone (301) 963-7157

THIS DRAWING AND INFORMATION CONTAINED IN THIS DRAWING ARE CONFIDENTIAL PROPERTY OF RHEOLOGICAL SOLUTIONS, INC. NO PART OF THIS DRAWING OR ANY INFORMATION CONTAINED IN THIS DRAWING MAY BE REPRODUCED OR TRANSFERRED BY ANY MEANS WITHOUT PERMISSION IN WRITING FROM RHEOLOGICAL SOLUTIONS, INC.

ALL DIMENSIONS IN INCHES  
TOLERANCE UNLESS OTHERWISE SPECIFIED  
.XXX = ±.005  
.XX = ±.015  
ANGLE = ± 1/2°

DIMENSIONAL LIMITS APPLY BEFORE PLATING INTERPRET PER ANSI Y14.5M-1982

DESCRIPTION  
Conveyor Assembly, v3, 180VDC, 10ft

MATERIAL  
See BOM

FINISH  
As Supplied

DRAWING NO. 56800	REV. 000	PART NUMBER 1701
----------------------	-------------	---------------------

DRAWN BY BJB	DATE 7/27/06	SIZE C
-----------------	-----------------	-----------

REV	DESCRIPTION	APPR.	DATE	DO NOT SCALE	SHEET 5 OF 7

6

5

4

3

2

1

F

F

E

E

D

D

C

C

B

B

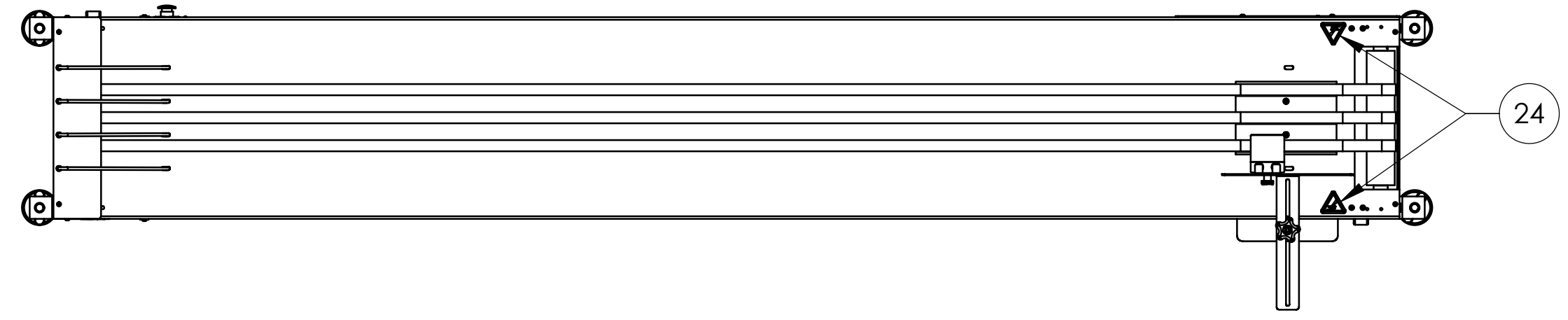
A

A

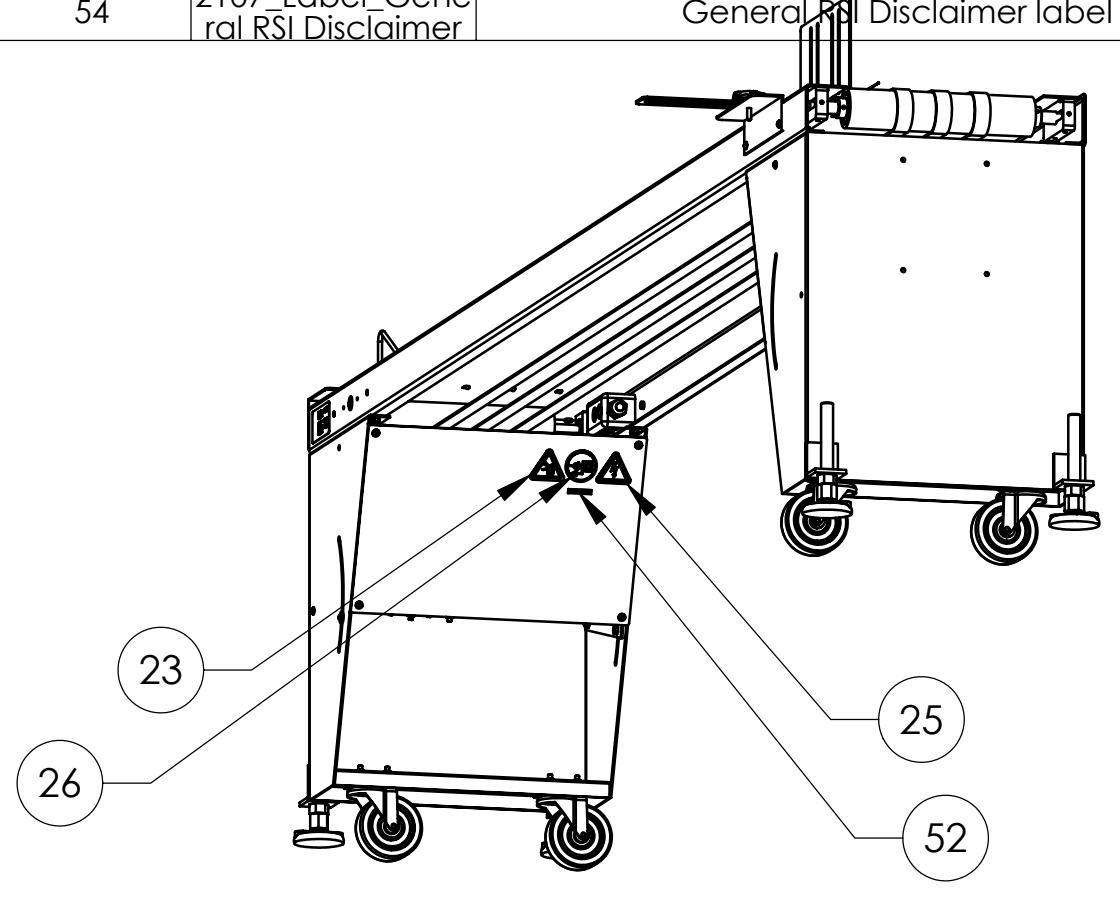
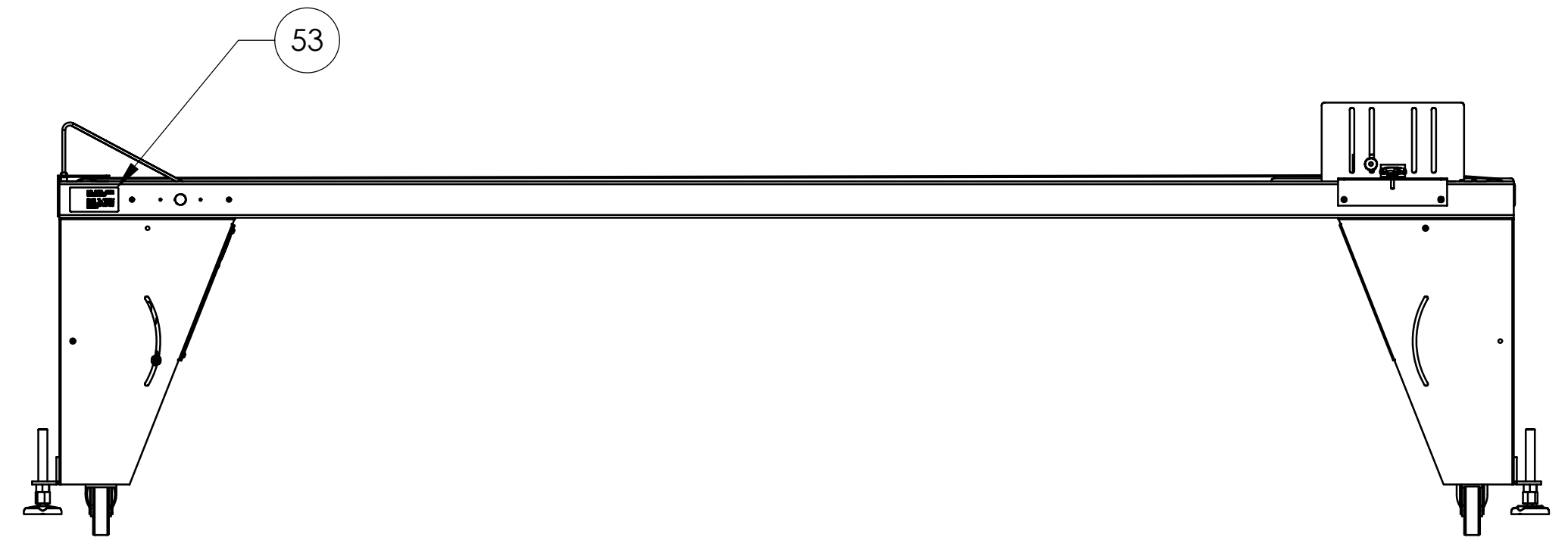


6 5 4 3 2 1

F  
E  
D  
C  
B  
A



BILL OF MATERIALS			
ITEM NO.	PART NUMBER	DESCRIPTION	QUANTITY
15	655_Belt Guide_1in	1" Belt Guides	3
16	718_Thumb Screw	Screw, Thumb, 10-32 x .75, Zinc Plated Steel	3
18	639_Take Ups	Take Ups	2
19	642_Bearing Bracket	6301 Bearing Block	2
22	650_Roller_Drive	2.5" Drive Roller	1
24	810	Hand Entanglement 2 Pulley	1
25	811	Pinch Zone	2
26	813	Electrical Shock Warning	1
27	815	Disconnect Before Service	1
29	2558_Conv Pick Up	Conveyor Pick Up	1
51	1193_Back Stop Mount	Back Stop Mount	1
52	1192_Back Stop	Conveyor Back Stop	1
53	2090_Label_180V DC 1-4 HP	180VDC 1/4HP Label	1
54	2107_Label_General RSI Disclaimer	General RSI Disclaimer label	1




Rheological Solutions, Inc.  
8345 Beechcroft Avenue, Suite J  
Gaithersburg, MD 20879-4164  
Phone (301) 963-7157

ALL DIMENSIONS IN INCHES  
TOLERANCE UNLESS OTHERWISE SPECIFIED  
.XXX = ±.005  
.XX = ±.015  
ANGLE = ± 1/2°

THIS DRAWING AND INFORMATION CONTAINED IN THIS DRAWING ARE CONFIDENTIAL PROPERTY OF RHEOLOGICAL SOLUTIONS, INC. NO PART OF THIS DRAWING OR ANY INFORMATION CONTAINED IN THIS DRAWING MAY BE REPRODUCED OR TRANSFERRED BY ANY MEANS WITHOUT PERMISSION IN WRITING FROM RHEOLOGICAL SOLUTIONS, INC.

DIMENSIONAL LIMITS APPLY BEFORE PLATING INTERPRET PER ANSI Y14.5M-1982

DESCRIPTION Conveyor Assembly, v3, 180VDC, 10ft			
MATERIAL See BOM			
FINISH As Supplied			
DRAWING NO. 56800	REV. 000	PART NUMBER 1701	
DRAWN BY BJB		DATE 7/27/06	SIZE C
REV	DESCRIPTION	APPR.	DATE

6 5 4 3 2 1

F  
E  
D  
C  
B  
A