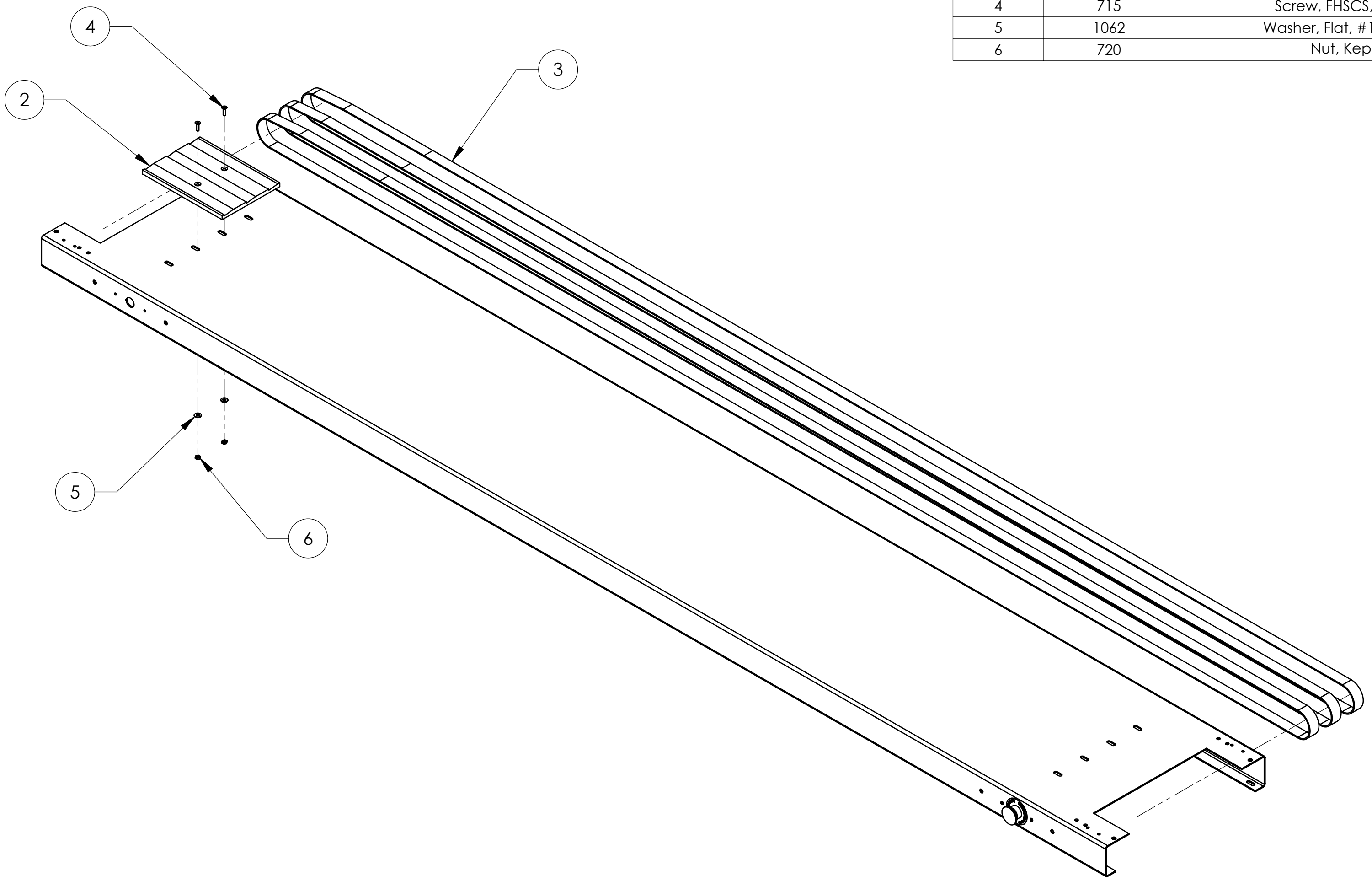


6 5 4 3 2 1

BILL OF MATERIALS			
ITEM NO.	PART NUMBER	DESCRIPTION	QUANTITY
2	2558_Conv Pick Up	Conveyor Pick Up	1
3	2608	240x1 SAB8E Endless Belt	3
4	715	Screw, FHSCS, 10-32 x .750	2
5	1062	Washer, Flat, #10, Zinc Plated	2
6	720	Nut, Keps, 10-32	2

F
E
D
C
B
A

F
E
D
C
B
A



Rheological Solutions, Inc.
8345 Beechcroft Avenue, Suite J
Gaithersburg, MD 20879-4164
Phone (301) 963-7157

THIS DRAWING AND INFORMATION CONTAINED IN THIS DRAWING ARE CONFIDENTIAL PROPERTY OF RHEOLOGICAL SOLUTIONS, INC. NO PART OF THIS DRAWING OR ANY INFORMATION CONTAINED IN THIS DRAWING MAY BE REPRODUCED OR TRANSFERRED BY ANY MEANS WITHOUT PERMISSION IN WRITING FROM RHEOLOGICAL SOLUTIONS, INC.

ALL DIMENSIONS IN INCHES
TOLERANCE UNLESS OTHERWISE SPECIFIED
.XXX = ±.005
.XX = ±.015
ANGLE = ± 1/2°

DIMENSIONAL LIMITS APPLY BEFORE PLATING INTERPRET PER ANSI Y14.5M-1982

DESCRIPTION
Conveyor Assembly, v3, 180VDC, 10ft

MATERIAL
See BOM

FINISH
As Supplied

DRAWING NO. 56800	REV. 000	PART NUMBER 1701
----------------------	-------------	---------------------

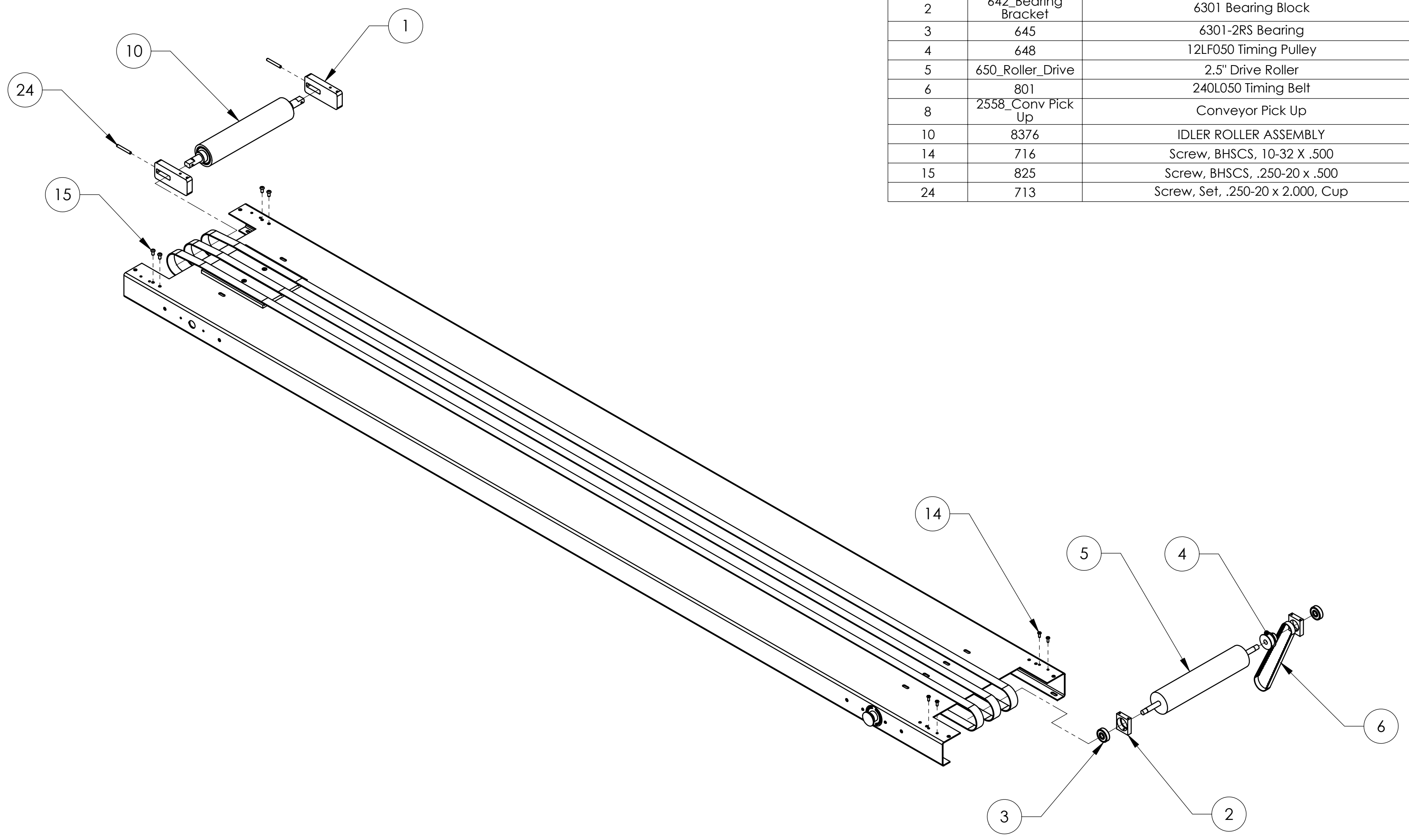
DRAWN BY BJB	DATE 7/27/06	SIZE C
-----------------	-----------------	-----------

REV	DESCRIPTION	APPR.	DATE	DO NOT SCALE	SHEET 2 OF 7

6 5 4 3 2 1

6 5 4 3 2 1

BILL OF MATERIALS			
ITEM NO.	PART NUMBER	DESCRIPTION	QUANTITY
1	639_Take Ups	Take Ups	2
2	642_Bearing Bracket	6301 Bearing Block	2
3	645	6301-2RS Bearing	2
4	648	12LF050 Timing Pulley	1
5	650_Roller_Drive	2.5" Drive Roller	1
6	801	240L050 Timing Belt	1
8	2558_Conv Pick Up	Conveyor Pick Up	1
10	8376	IDLER ROLLER ASSEMBLY	1
14	716	Screw, BHSCS, 10-32 X .500	4
15	825	Screw, BHSCS, .250-20 x .500	4
24	713	Screw, Set, .250-20 x 2.000, Cup	2



F
E
D
C
B
A

F
E
D
C
B
A



Rheological Solutions, Inc.
8345 Beechcroft Avenue, Suite J
Gaithersburg, MD 20879-4164
Phone (301) 963-7157

ALL DIMENSIONS
IN INCHES
TOLERANCE UNLESS
OTHERWISE SPECIFIED
.XXX = ±.005
.XX = ±.015
ANGLE = ± 1/2°

DIMENSIONAL LIMITS
APPLY BEFORE PLATING
INTERPRET PER ANSI
Y14.5M-1982

THIS DRAWING AND INFORMATION CONTAINED
IN THIS DRAWING ARE CONFIDENTIAL PROPERTY
OF RHEOLOGICAL SOLUTIONS, INC. NO PART OF
THIS DRAWING OR ANY INFORMATION CONTAINED
IN THIS DRAWING MAY BE REPRODUCED OR
TRANSFERRED BY ANY MEANS WITHOUT PERMISSION
IN WRITING FROM RHEOLOGICAL SOLUTIONS, INC.

DESCRIPTION
Conveyor Assembly, v3, 180VDC, 10ft

MATERIAL
See BOM

FINISH
As Supplied

DRAWING NO. 56800	REV. 000	PART NUMBER 1701
----------------------	-------------	---------------------

DRAWN BY BJB	DATE 7/27/06	SIZE C
-----------------	-----------------	-----------

REV	DESCRIPTION	APPR.	DATE	DO NOT SCALE	SHEET 3 OF 7

6 5 4 3 2 1

6

5

4

3

2

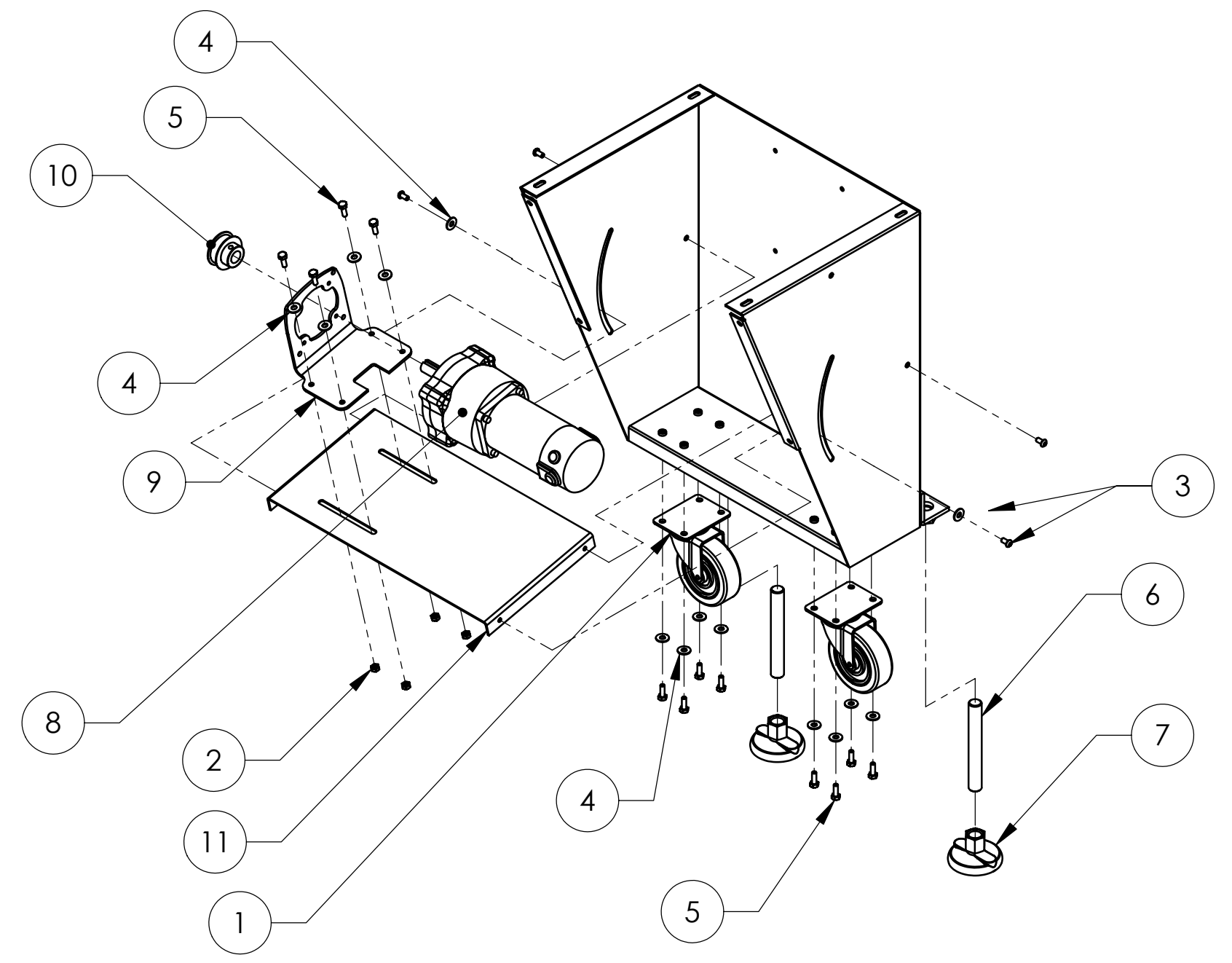
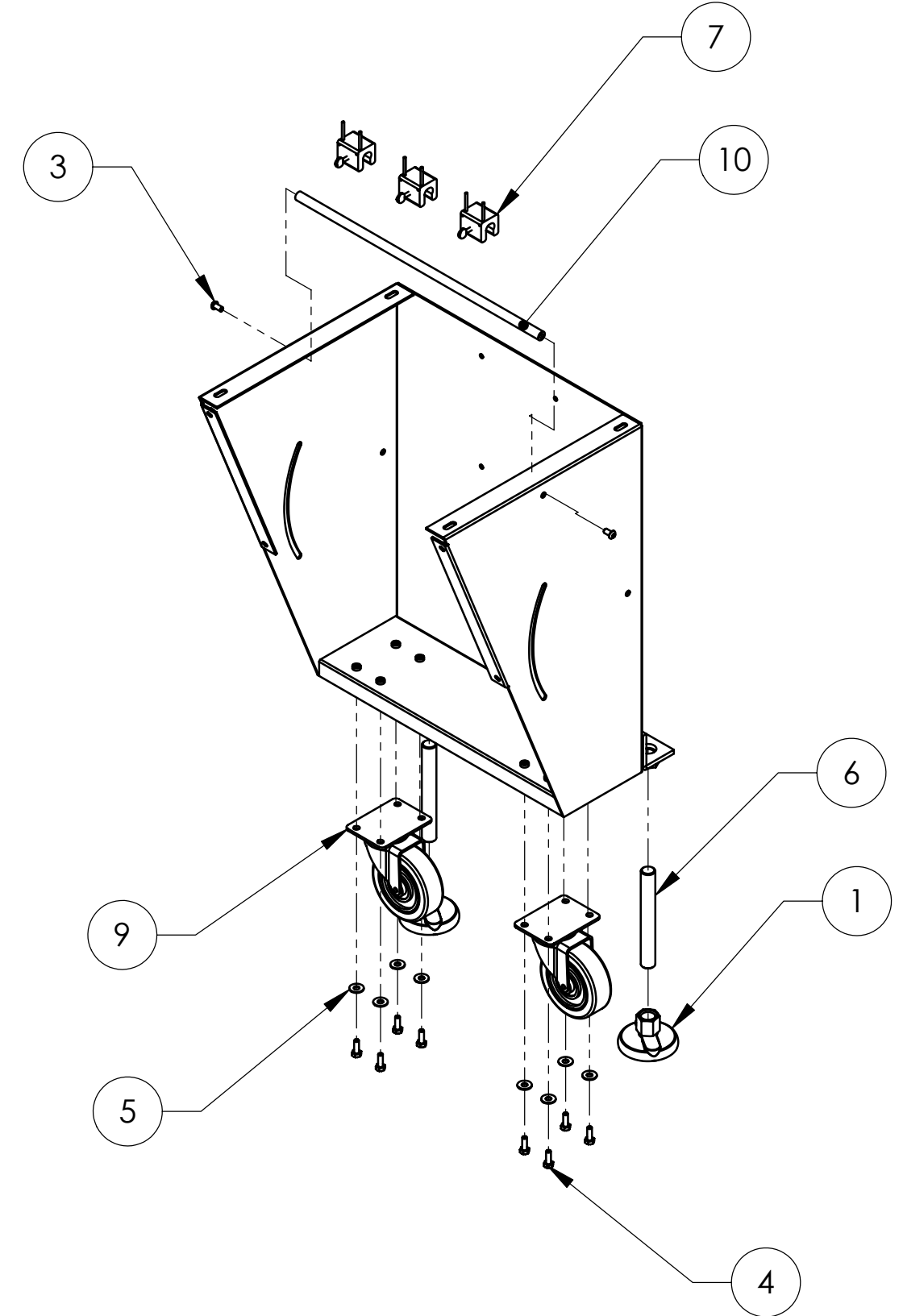
1

BILL OF MATERIALS

ITEM NO.	PART NUMBER	DESCRIPTION	QUANTITY
1	2157	3/4-10 3" Base Feet	2
3	825	Screw, BHSCS, .250-20 x .500	2
4	824	Screw, HHCS, .250-20 x .750	8
5	831	Washer, Flat, 1/4, Zinc Plated Steel	8
6	2158	3/4-10 Threaded Stud	2
7	655_Belt Guide Lin	1" Belt Guides	3
8	718_Thumb Screw	Screw, Thumb, 10-32 x .75, Zinc Plated Steel	3
9	1240	4" Casters	2
10	1190	Conveyor Support Rod	1

BILL OF MATERIALS

ITEM NO.	PART NUMBER	DESCRIPTION	QUANTITY
1	1240	4" Casters	2
2	833	Nut, Keps, .250-20	8
3	825	Screw, BHSCS, .250-20 x .500	4
4	831	Washer, Flat, 1/4, Zinc Plated Steel	14
5	824	Screw, HHCS, .250-20 x .750	12
6	2158	3/4-10 Threaded Stud	2
7	2157	3/4-10 3" Base Feet	2
8	1702	Motor, 1/4HP, 180VDC, 1:30	1
9	1217	Right Angle	1
10	1241	15LF050 Pulley 3/4 Bore	1
11	1138	Conveyor Motor Mount	1



Rheological Solutions, Inc.
8345 Beechcroft Avenue, Suite J
Gaithersburg, MD 20879-4164
Phone (301) 963-7157

THIS DRAWING AND INFORMATION CONTAINED IN THIS DRAWING ARE CONFIDENTIAL PROPERTY OF RHEOLOGICAL SOLUTIONS, INC. NO PART OF THIS DRAWING OR ANY INFORMATION CONTAINED IN THIS DRAWING MAY BE REPRODUCED OR TRANSFERRED BY ANY MEANS WITHOUT PERMISSION IN WRITING FROM RHEOLOGICAL SOLUTIONS, INC.

ALL DIMENSIONS IN INCHES
TOLERANCE UNLESS OTHERWISE SPECIFIED
.XXX = ±.005
.XX = ±.015
ANGLE = ± 1/2°

DIMENSIONAL LIMITS APPLY BEFORE PLATING INTERPRET PER ANSI Y14.5M-1982

DESCRIPTION
Conveyor Assembly, v3, 180VDC, 10ft

MATERIAL
See BOM

FINISH
As Supplied

DRAWING NO. 56800	REV. 000	PART NUMBER 1701
----------------------	-------------	---------------------

DRAWN BY BJB	DATE 7/27/06	SIZE C
-----------------	-----------------	-----------

REV	DESCRIPTION	APPR.	DATE	DO NOT SCALE	SHEET 4 OF 7

6

5

4

3

2

1

6

5

4

3

2

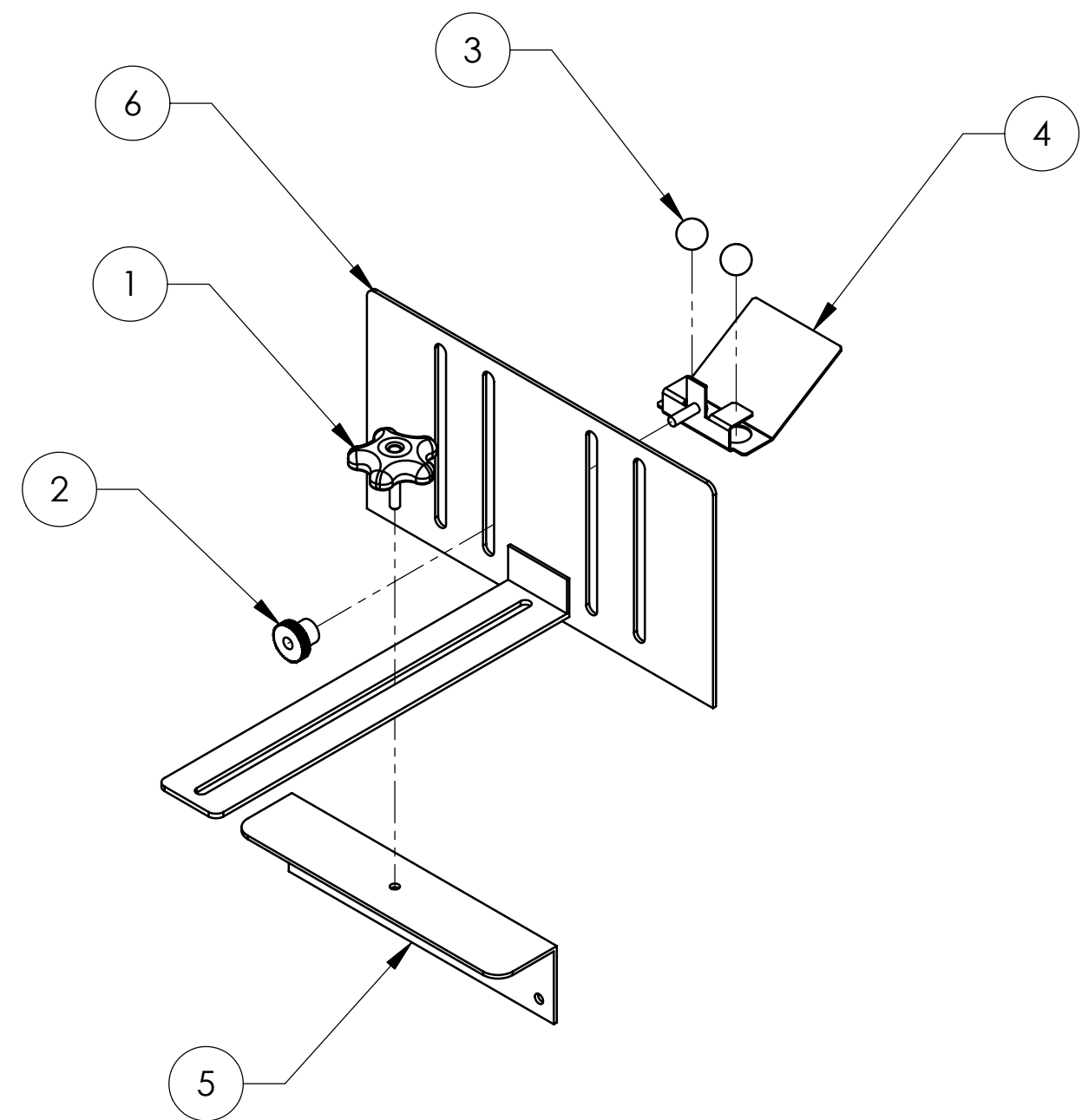
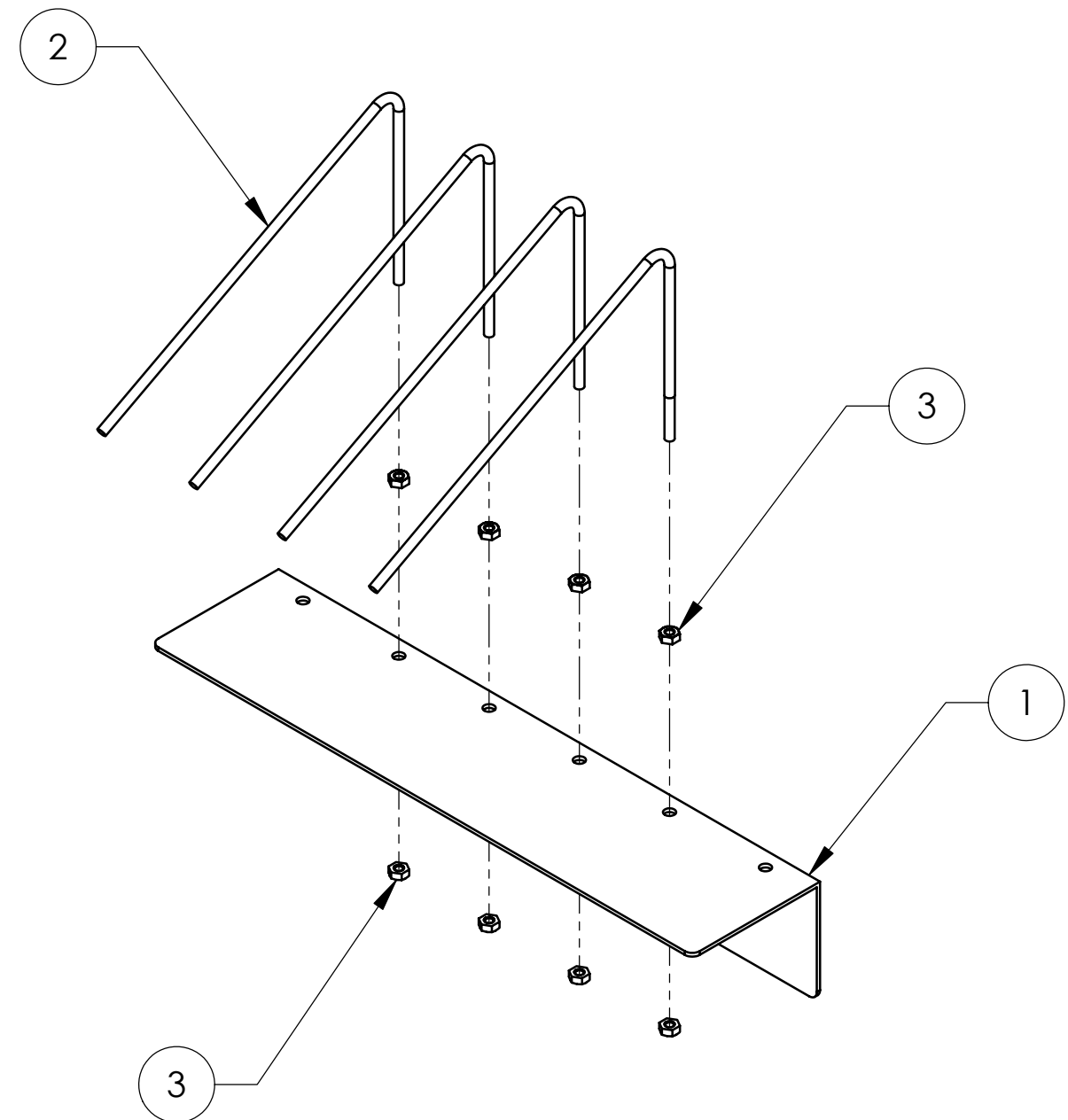
1

BILL OF MATERIALS

ITEM NO.	PART NUMBER	DESCRIPTION	QUANTITY
1	1137	Conveyor Cover	1
2	1140	Wire Paper Catch	4
3	833	Nut, Keps, .250-20	8

BILL OF MATERIALS

ITEM NO.	PART NUMBER	DESCRIPTION	QUANTITY
1	1243	1/4-20 Handle	1
2	1242	Nut, Thumb, .3125-18 x .625, Steel	1
3	1214	Ball Bearing	2
4	1213	Thin Media Retrainer	1
5	1193_Back Stop Mount	Back Stop Mount	1
6	1192_Back Stop	Conveyor Back Stop	1



Rheological Solutions, Inc.
8345 Beechcroft Avenue, Suite J
Gaithersburg, MD 20879-4164
Phone (301) 963-7157

THIS DRAWING AND INFORMATION CONTAINED IN THIS DRAWING ARE CONFIDENTIAL PROPERTY OF RHEOLOGICAL SOLUTIONS, INC. NO PART OF THIS DRAWING OR ANY INFORMATION CONTAINED IN THIS DRAWING MAY BE REPRODUCED OR TRANSFERRED BY ANY MEANS WITHOUT PERMISSION IN WRITING FROM RHEOLOGICAL SOLUTIONS, INC.

ALL DIMENSIONS IN INCHES
TOLERANCE UNLESS OTHERWISE SPECIFIED
.XXX = ±.005
.XX = ±.015
ANGLE = ± 1/2°

DIMENSIONAL LIMITS APPLY BEFORE PLATING INTERPRET PER ANSI Y14.5M-1982

DESCRIPTION
Conveyor Assembly, v3, 180VDC, 10ft

MATERIAL
See BOM

FINISH
As Supplied

DRAWING NO. 56800	REV. 000	PART NUMBER 1701
----------------------	-------------	---------------------

DRAWN BY BJB	DATE 7/27/06	SIZE C
-----------------	-----------------	-----------

REV	DESCRIPTION	APPR.	DATE	DO NOT SCALE	SHEET 5 OF 7

6

5

4

3

2

1

F

F

E

E

D

D

C

C

B

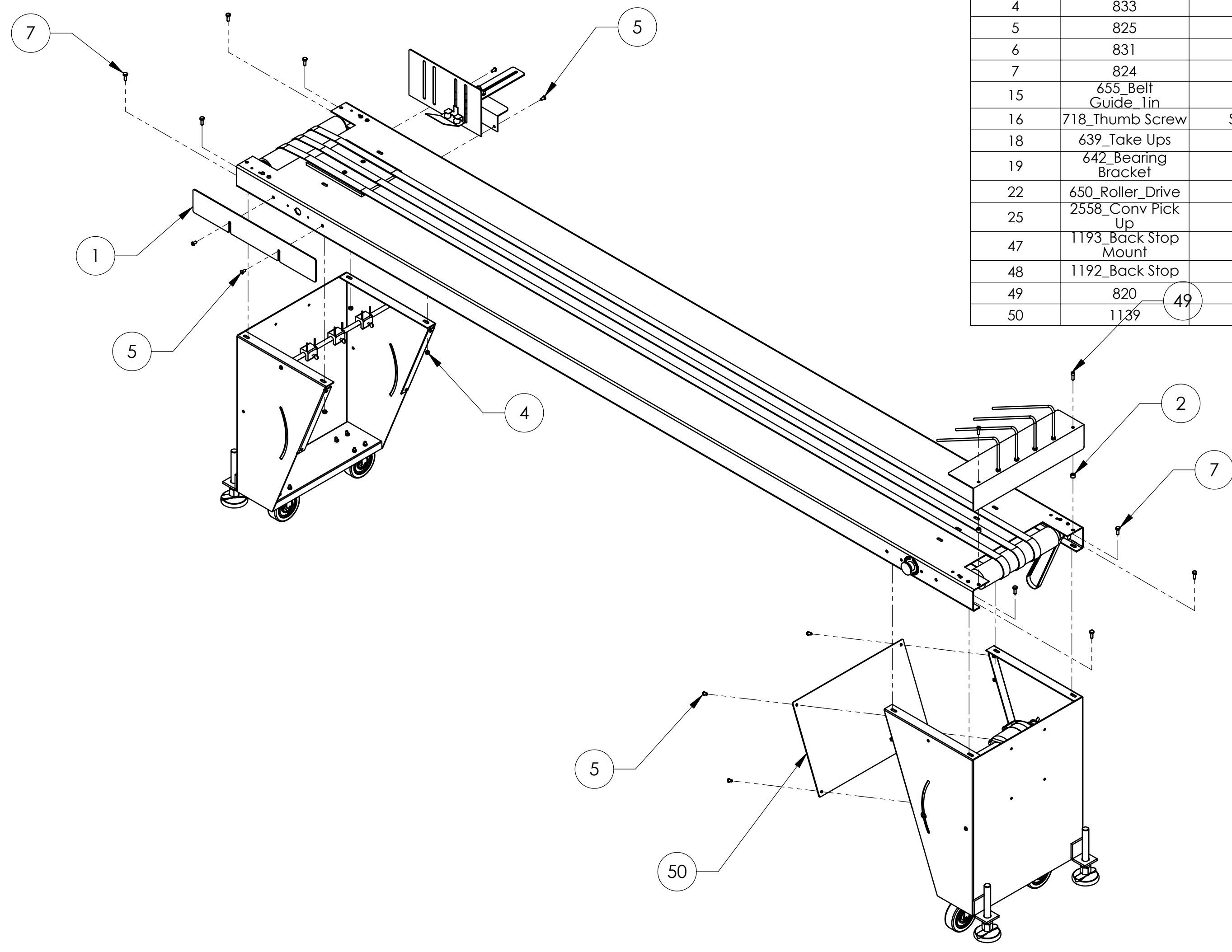
B

A

A

6 5 4 3 2 1

F
E
D
C
B
A



BILL OF MATERIALS			
ITEM NO.	PART NUMBER	DESCRIPTION	QUANTITY
1	1189	Conveyor Front Catch	1
2	1503	Spacer, .5 x .375, Steel	2
4	833	Nut, Keps, .250-20	8
5	825	Screw, BHSCS, .250-20 x .500	8
6	831	Washer, Flat, 1/4, Zinc Plated Steel	22
7	824	Screw, HHCS, .250-20 x .750	8
15	655_Belt Guide Lin	1" Belt Guides	3
16	718_Thumb Screw	Screw, Thumb, 10-32 x .75, Zinc Plated Steel	3
18	639_Take Ups	Take Ups	2
19	642_Bearing Bracket	6301 Bearing Block	2
22	650_Roller_Drive	2.5" Drive Roller	1
25	2558_Conv Pick Up	Conveyor Pick Up	1
47	1193_Back Stop Mount	Back Stop Mount	1
48	1192_Back Stop	Conveyor Back Stop	1
49	820	Screw, SHCS, .250-20 x .750	2
50	1139	Conveyor Safety Cover	1



Rheological Solutions, Inc.
8345 Beechcroft Avenue, Suite J
Gaithersburg, MD 20879-4164
Phone (301) 963-7157

THIS DRAWING AND INFORMATION CONTAINED IN THIS DRAWING ARE CONFIDENTIAL PROPERTY OF RHEOLOGICAL SOLUTIONS, INC. NO PART OF THIS DRAWING OR ANY INFORMATION CONTAINED IN THIS DRAWING MAY BE REPRODUCED OR TRANSFERRED BY ANY MEANS WITHOUT PERMISSION IN WRITING FROM RHEOLOGICAL SOLUTIONS, INC.

ALL DIMENSIONS IN INCHES

TOLERANCE UNLESS OTHERWISE SPECIFIED

.XXX = ±.005

.XX = ±.015

ANGLE = ± 1/2°

DIMENSIONAL LIMITS APPLY BEFORE PLATING INTERPRET PER ANSI Y14.5M-1982

DESCRIPTION	Conveyor Assembly, v3, 180VDC, 10ft		
MATERIAL	See BOM		
FINISH	As Supplied		
DRAWING NO.	REV.	PART NUMBER	
56800	000	1701	
DRAWN BY	DATE	SIZE	
BJB	7/27/06	C	
REV	DESCRIPTION	APPR.	DATE

6 5 4 3 2 1

F
E
D
C
B
A

6 5 4 3 2 1

F

E

D

C

B

A

F

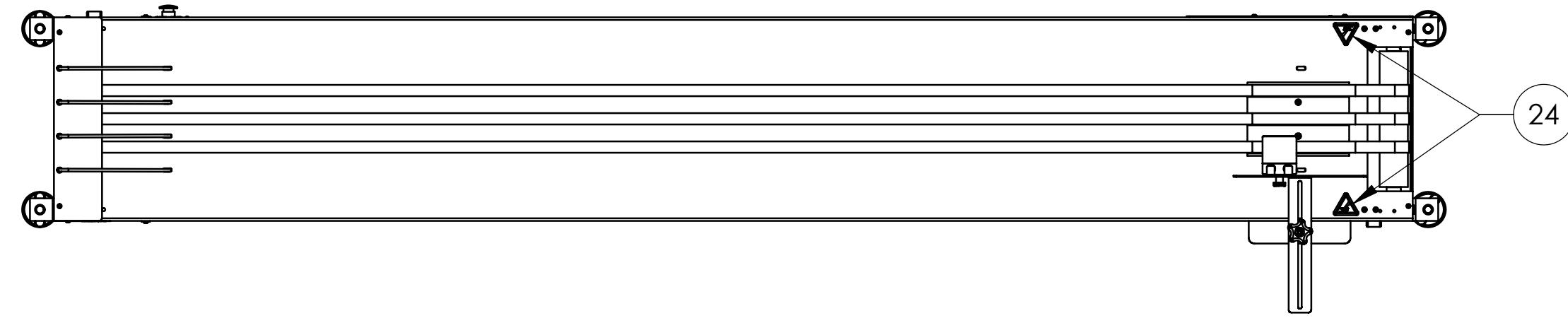
E

D

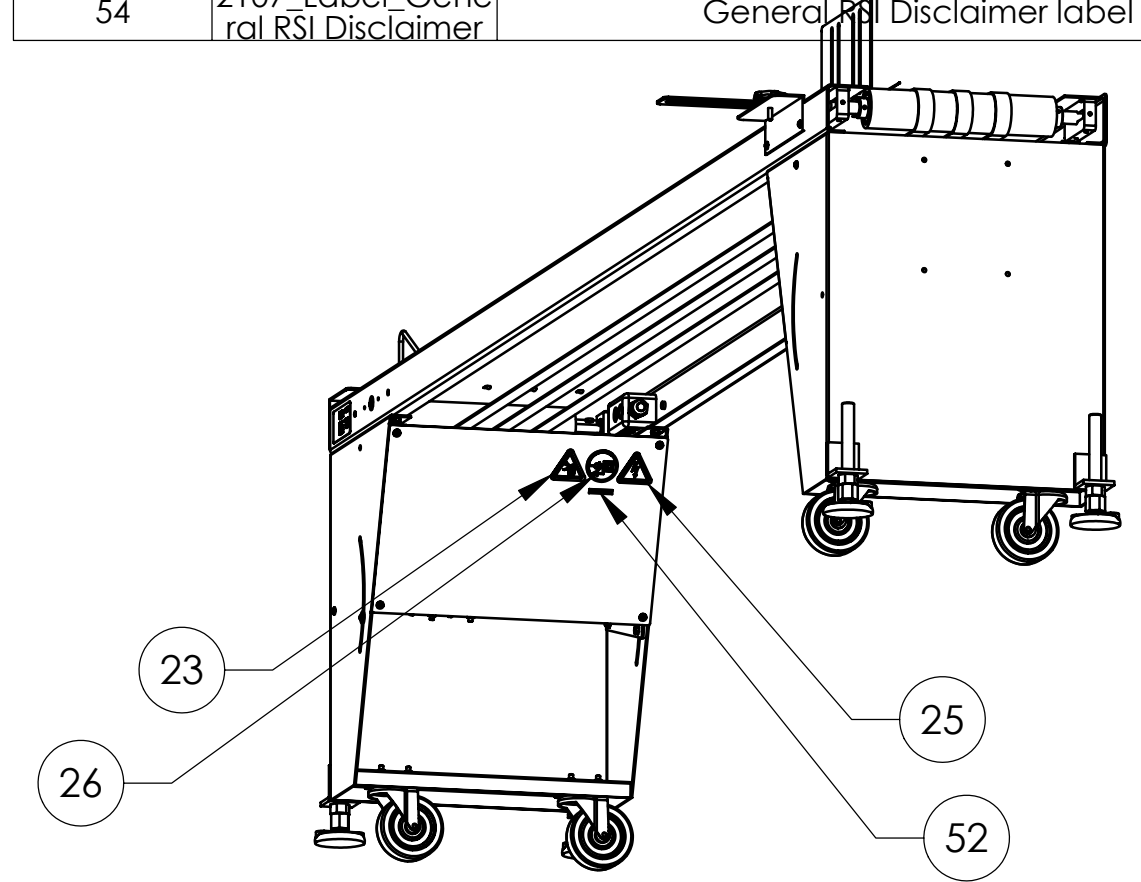
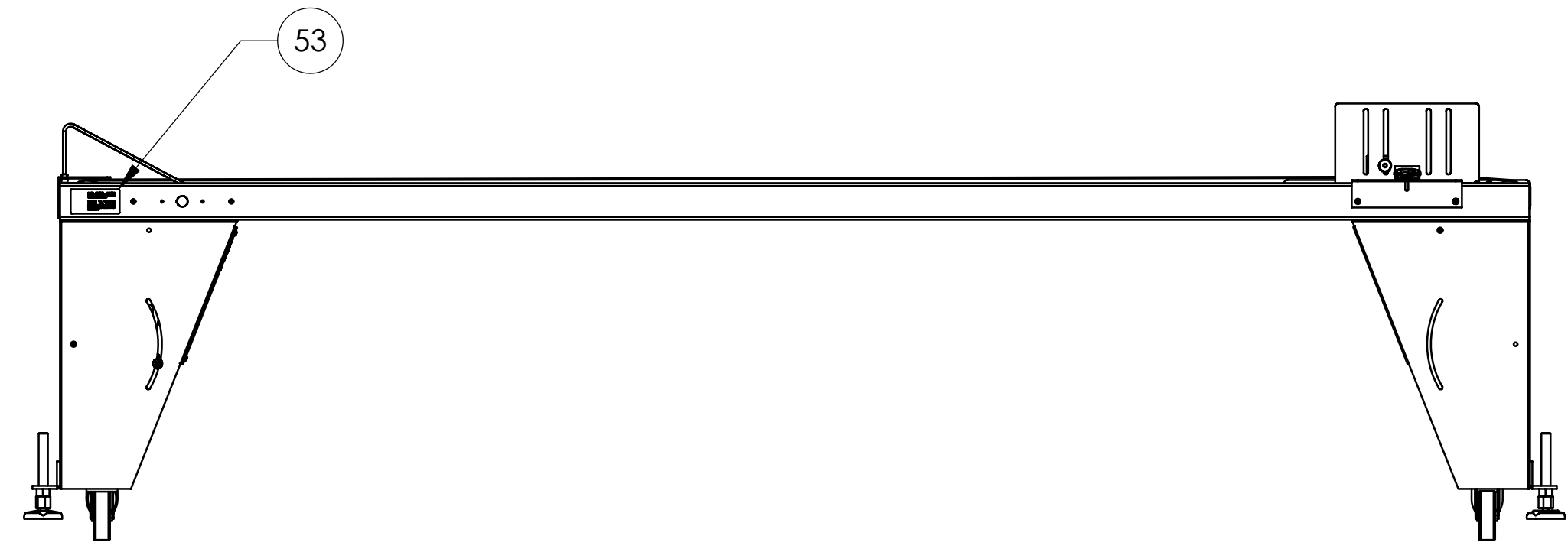
C


B

A



BILL OF MATERIALS			
ITEM NO.	PART NUMBER	DESCRIPTION	QUANTITY
15	655_Belt Guide_1in	1" Belt Guides	3
16	718_Thumb Screw	Screw, Thumb, 10-32 x .75, Zinc Plated Steel	3
18	639_Take Ups	Take Ups	2
19	642_Bearing Bracket	6301 Bearing Block	2
22	650_Roller_Drive	2.5" Drive Roller	1
24	810	Hand Entanglement 2 Pulley	1
25	811	Pinch Zone	2
26	813	Electrical Shock Warning	1
27	815	Disconnect Before Service	1
29	2558_Conv Pick Up	Conveyor Pick Up	1
51	1193_Back Stop Mount	Back Stop Mount	1
52	1192_Back Stop	Conveyor Back Stop	1
53	2090_Label_180V DC 1-4 HP	180VDC 1/4HP Label	1
54	2107_Label_General RSI Disclaimer	General RSI Disclaimer label	1



 Rheological Solutions, Inc. 8345 Beechcroft Avenue, Suite J Gaithersburg, MD 20879-4164 Phone (301) 963-7157	ALL DIMENSIONS IN INCHES TOLERANCE UNLESS OTHERWISE SPECIFIED .XXX = ±.005 .XX = ±.015 ANGLE = ± 1/2°	DIMENSIONAL LIMITS APPLY BEFORE PLATING INTERPRET PER ANSI Y14.5M-1982	DESCRIPTION Conveyor Assembly, v3, 180VDC, 10ft	MATERIAL See BOM	FINISH As Supplied	DRAWING NO. 56800	REV. 000	PART NUMBER 1701	DRAWN BY BJB	DATE 7/27/06	SIZE C
	THIS DRAWING AND INFORMATION CONTAINED IN THIS DRAWING ARE CONFIDENTIAL PROPERTY OF RHEOLOGICAL SOLUTIONS, INC. NO PART OF THIS DRAWING OR ANY INFORMATION CONTAINED IN THIS DRAWING MAY BE REPRODUCED OR TRANSFERRED BY ANY MEANS WITHOUT PERMISSION IN WRITING FROM RHEOLOGICAL SOLUTIONS, INC.			DO NOT SCALE	SHEET 7 OF 7						

6 5 4 3 2 1